

# LOWER CHICHESTER FORMER BANK BRANCH AVAILABLE

1501 Market Street, Linwood, Delaware County, PA

**Building Size:**  
**3,465 SF**  
**Lot Size:**  
**.73 Acres**

- Great Visibility from Market Street
- Dense population in surrounding area
- 3 drive thru lanes



## Contact:

**Marc Mandel**

[mmandel@rasbrokerage.com](mailto:mmandel@rasbrokerage.com)

**484-567-2826**

or

**Ed Enoch**

[eenoch@famecoretail.com](mailto:eenoch@famecoretail.com)

**484-567-2346**

**RAS**  
B R O K E R A G E

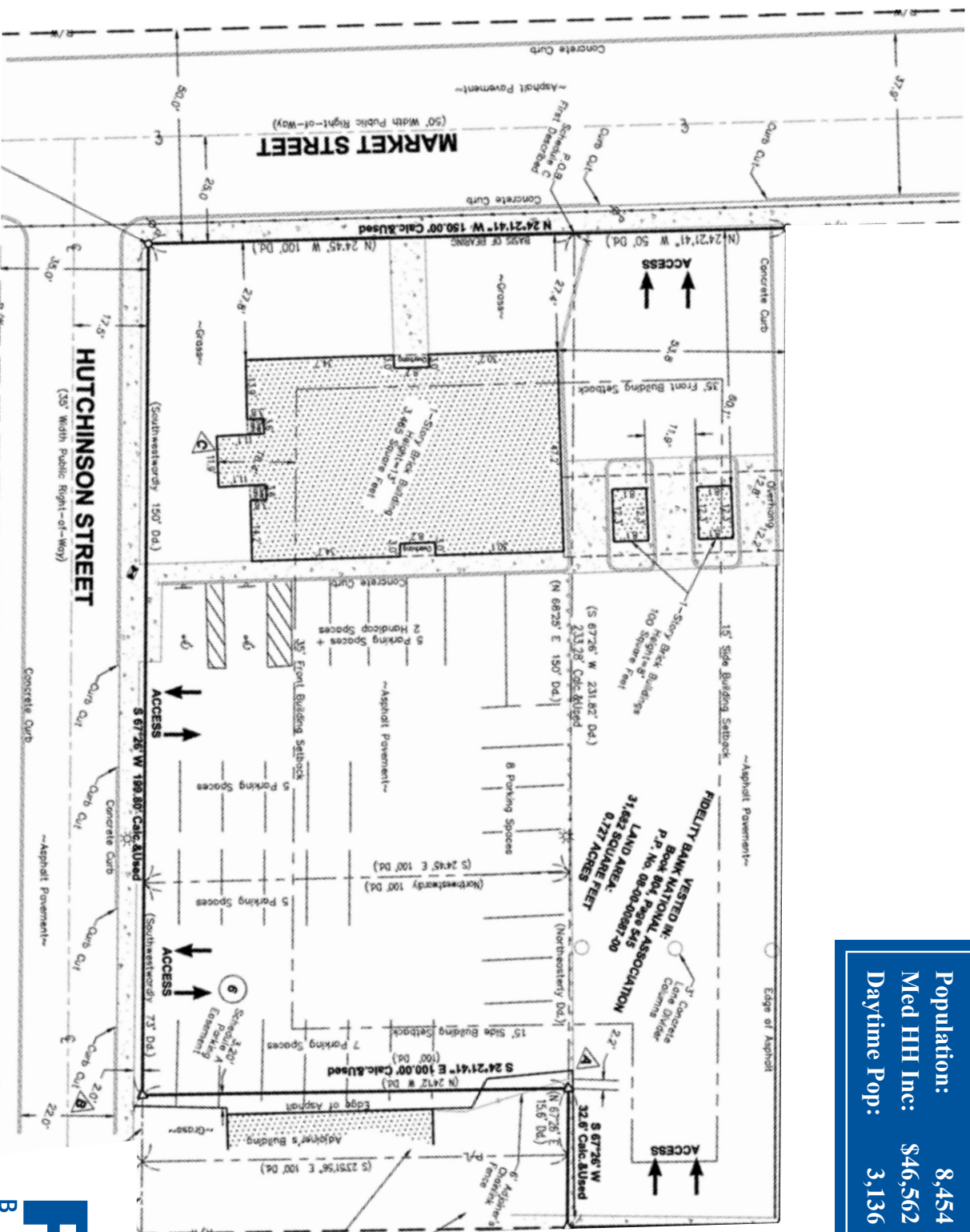
633 West Germantown Pike; Suite 203  
Plymouth Meeting, PA 19462  
Phone: 215.322.8070  
Fax: 215.322.8460  
[www.rasbrokerage.com](http://www.rasbrokerage.com)



# SITE PLAN

## DEMOGRAPHICS

	1 mile	3 miles	5 miles
Population:	8,454	72,686	167,826
Med HH Inc:	\$46,562	\$51,352	\$58,759
Daytime Pop:	3,136	23,183	55,387



**RAS**  
B R O K E R A G E

All information furnished regarding property for sale, rental or financing is from sources deemed reliable, but no warranty or representation is made as to the accuracy thereof and same is submitted subject to errors, omissions, change of price, rental or other condition, prior to sale, lease or financing or withdrawal without notice. No liability of any kind is to be imposed on the broker herein.