

# FORMER CHARLIE BROWN'S STEAKHOUSE AVAILABLE

3523 Union Deposit Road, Harrisburg, PA



- Fully equipped freestanding restaurant located along Union Deposit Road in close proximity to Outback Steakhouse, Texas Roadhouse and Friday's
- Building Size: +/- 6,800 SF, plus 3,000 SF deck
- Property Size: +/-2 acres
- Seats: Approximately 249
- Utilities: Gas, Electric, Water, Sewer, Telephone
- Taxes: \$25,819 per year
- Asking Rent: Please call for more information

Please contact Jay Miller for more information  
484.567.2829  
jmillerr@rasbrokerage.com

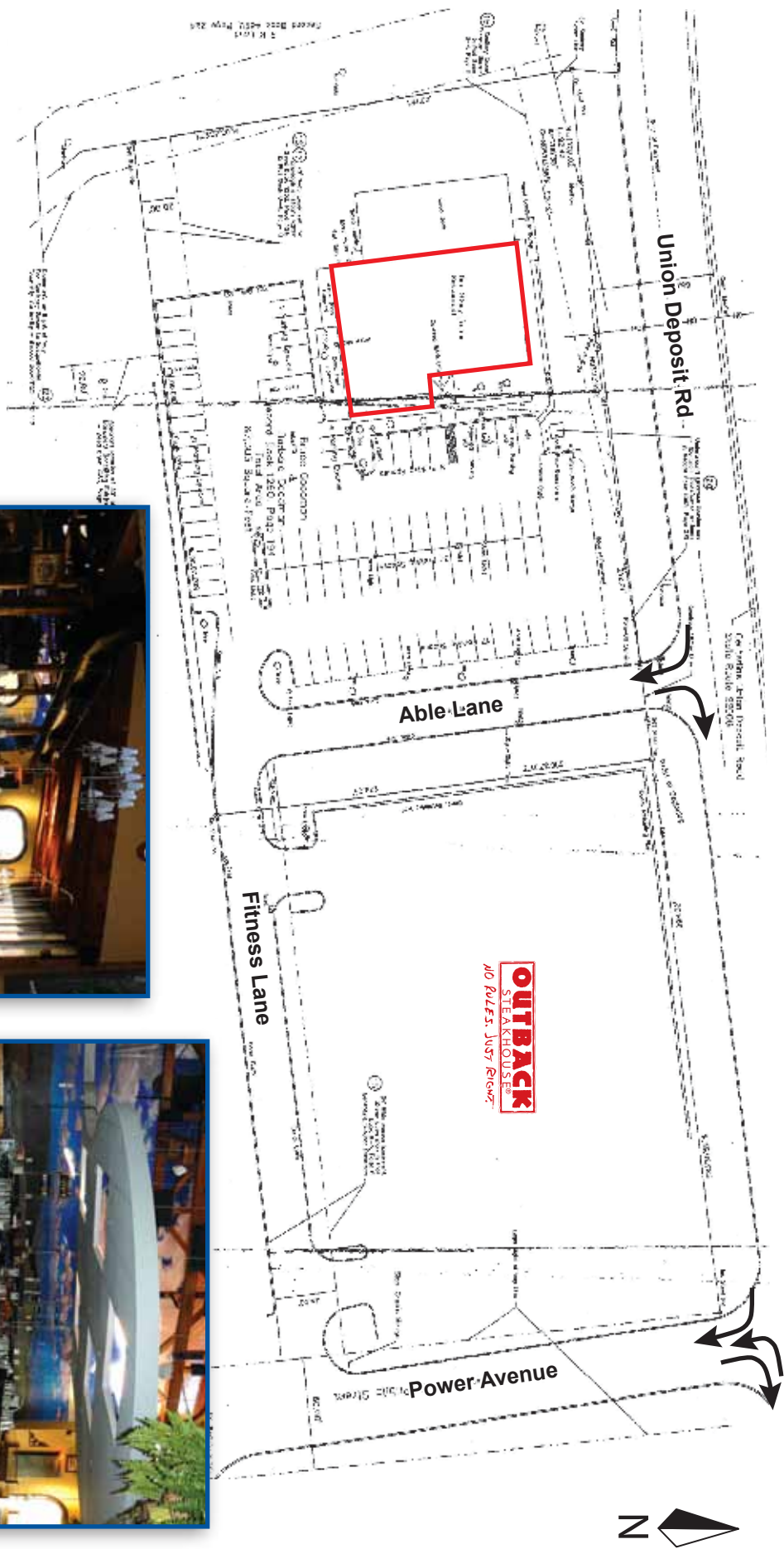


## DEMOGRAPHICS

	1 mile	3 miles	5 miles
Population:	10,716	85,164	165,855
Avg HH Inc:	\$57,761	\$54,731	\$62,206
Daytime Pop:	8,504	73,406	154,120

633 West Germantown Pike; Suite 203  
Plymouth Meeting, PA 19462  
Phone: 215.322.8070  
Fax: 215.322.8460

**RAS**  
B R O K E R A G E



All information furnished regarding property for sale, rental or financing is from sources deemed reliable, but no warranty or representation is made as to the accuracy thereof and same is submitted subject to errors, omissions, change of price, rental or other condition, prior to sale, lease or financing or withdrawal without notice. No liability of any kind is to be imposed on the broker herein.

**RAS**  
B R O K E R A G E



# Harrisburg East, PA

