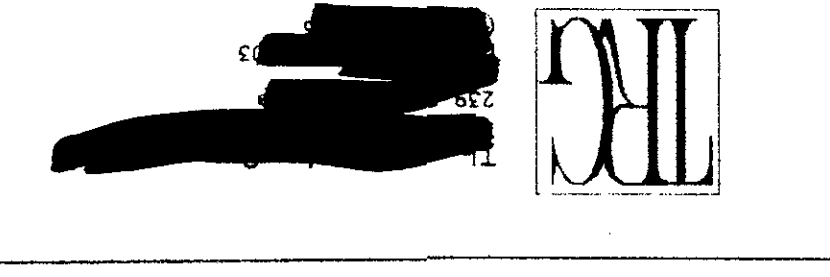
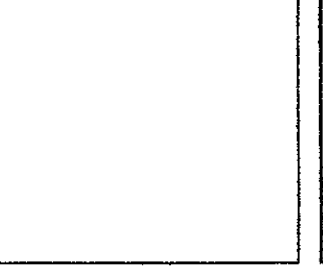
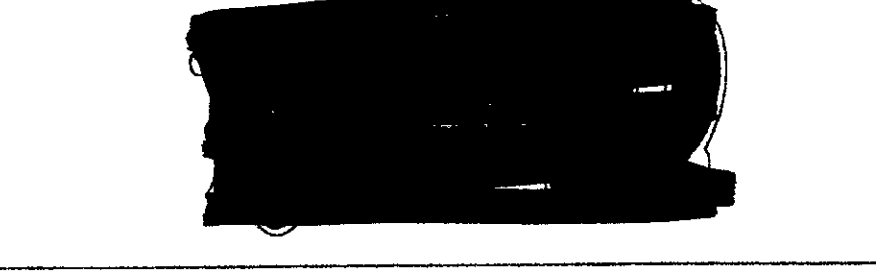
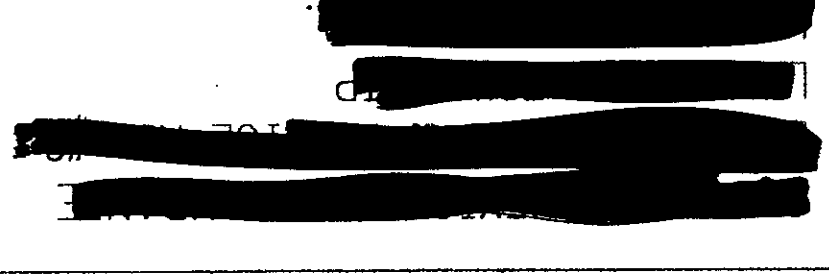


92002



DRAWN BY
CHECKED BY
DATE
09/03/92
REVISIONS

SHEET TITLE
SITE PLAN
SCALE: 1" = 20'-0"
PHOTO 6A
802SP1

SHEET NUMBER
SP1

GENERAL NOTES:

1. THE INFORMATION SHOWN HEREIN WAS TAKEN FROM A SURVEY BY:
HUNT ENGINEERS, INC.
WILLIAMSPORT, PA. 17701
DATE: 7-26-91
2. LOCATIONS OF ALL UTILITIES SHOWN ON THESE PLANS ARE BASED ON RECORD DRAWINGS AND FIELD SURVEY. THE CONTRACTOR SHALL VERIFY THE EXACT LOCATION OF UTILITIES WITH THE UTILITY OWNERS PRIOR TO COMMENCEMENT OF CONSTRUCTION.
3. ALL HANDICAP SITE FEATURES SHALL BE CONSTRUCTED TO MEET ALL STATE AND LOCAL CODES.
4. ANY DISCREPANCY IN THIS PLAN AND ACTUAL FIELD CONDITIONS SHALL BE THE RESPONSIBILITY OF THE CONTRACTOR. THE CONTRACTOR SHALL BE RESPONSIBLE FOR VERIFICATION OF UTILITIES, EASEMENTS, AND DIMENSIONS SHOWN HEREON BEFORE BEGINNING CONSTRUCTION.
5. PRIOR TO STARTING CONSTRUCTION, THE GENERAL CONTRACTOR SHALL BE RESPONSIBLE FOR OBTAINING ALL NECESSARY PERMITS AND APPROVALS FROM ALL APPLICABLE AGENCIES. THE CONTRACTOR SHALL BE RESPONSIBLE FOR OBTAINING ALL NECESSARY PERMITS AND APPROVALS FROM ALL APPLICABLE AGENCIES. THE CONTRACTOR SHALL BE RESPONSIBLE FOR OBTAINING ALL NECESSARY PERMITS AND APPROVALS FROM ALL APPLICABLE AGENCIES.
6. THE GENERAL CONTRACTOR SHALL CONTACT ALL OWNERS OF EASEMENTS, RIGHTS-OF-WAY, AND PUBLIC OR PRIVATE PROPERTY TO BE WORKED IN THESE AREAS.
7. CONTRACTOR SHALL MAINTAIN THE SITE IN A MANNER SO THAT WORKMEN AND PUBLIC SHALL BE PROTECTED FROM INJURY AND ADJACENT PROPERTY PROTECTED FROM DAMAGE.
8. ACCESS TO UTILITIES, FIRE HYDRANTS, STREET LIGHTING, ETC., SHALL REMAIN UNOBTAINED, UNLESS COORDINATED WITH RESPECTIVE UTILITY CONTRACTOR. CONTRACTOR IS RESPONSIBLE FOR DAMAGE TO ANY EXISTING ITEM AND/OR MATERIAL, INSIDE OR OUTSIDE CONTRACT LIMITS DUE TO CONSTRUCTION OPERATIONS.
9. ALL DIMENSIONS ARE TO THE FACE OF CURB, UNLESS OTHERWISE NOTED.
10. DO NOT SCALE THIS DRAWING AS IT IS A REPRODUCTION AND SUBJECT TO DISTORTION.
11. THE GENERAL CONTRACTOR SHALL REMOVE ALL TRASH AND DEBRIS FROM THE SITE UPON COMPLETION OF THE PROJECT.
12. THE G.C. SHALL KEEP THE AREA OUTSIDE THE "CONSTRUCTION LIMITS" BROOM CLEAN AT ALL TIMES.
13. G.C. WILL ERECT A SITE IDENTIFICATION SIGN.

KEYNOTES:

1. PARKING LOT LIGHT, SEE 1/SP-4
2. FRENCH DRAIN, SEE DETAIL 2/SP-4
3. ASPHALT PAVEMENT, SEE DETAIL 3/SP-4
4. CONCRETE PAVEMENT, SEE DETAIL 4/SP-4
5. CONCRETE CURB STOPS, SEE DETAIL 1/SP-1
6. CONCRETE HDR CURB, SEE DETAIL 9/SP-4
7. CONCRETE WALK W/ TURNDOWN, SEE DETAIL 6/SP-4
8. PIPE BOLLARD, SEE DETAIL 8/SP-4
9. HANDICAP PARKING SIGN, SEE DETAIL 9/SP-4
10. FACADE LIGHT, SEE 10/SP-4
11. TRASH ENCLOSURE GATE, SEE DETAILS 2 & 3/SP-3
12. FROST PROOF YARD HYDRANT, SEE DETAIL 1/SP-3
13. CHI-CHI'S POLE SIGN, 91 S.F., Ø 38 FEET
14. BUILDING MOUNTED SIGN
15. PAINTED STRIPES, SYMBOLS, PER SPECS.
16. REFUSE ENCLOSURE, SEE DETAIL 9/5-3
17. TRANSFORMER PAD PER POWER CO. SPECS.
18. 1000 GALLON GREASE TRAP, SEE DETAIL ON SHEET P-3
19. CONCRETE SIDEWALK, SEE DETAIL 7/SP-4
20. GAS METER PER GAS CO. SPECIFICATIONS
21. WATER METER PER WATER COMPANY SPECS.
22. HANDICAP ACCESS, 1:12 SLOPE MAXIMUM
23. NEW CONCRETE INLET W/ CONC. APRON, SEE DET. 4/SP-3

SITE STATISTICS:

PARCEL AREA: 53,925 S.F. / 1.238 acres
 BUILDING AREA: 6,024 S.F.
 PAVED AREA: 42,827 S.F.
 GREEN AREA: 5,574 S.F.

PARKING DATA
 STANDARD STALLS: 91 @ 9' x 18'
 HANDICAP STALLS: 4 (see plan)
 TOTAL SHOWN: 97

CONTACTS:

ELECTRIC:
 Pennsylvania Power & Light
 Route 220 East, P.O. Box 158
 Montoursville, Pa. 17754
 Phone: 1-800-332-6510

GAS:
 Pennsylvania Gas & Water Co.
 24 West Fifth St.
 Williamsport, Pa. 17701
 Phone: (717) 327-2011

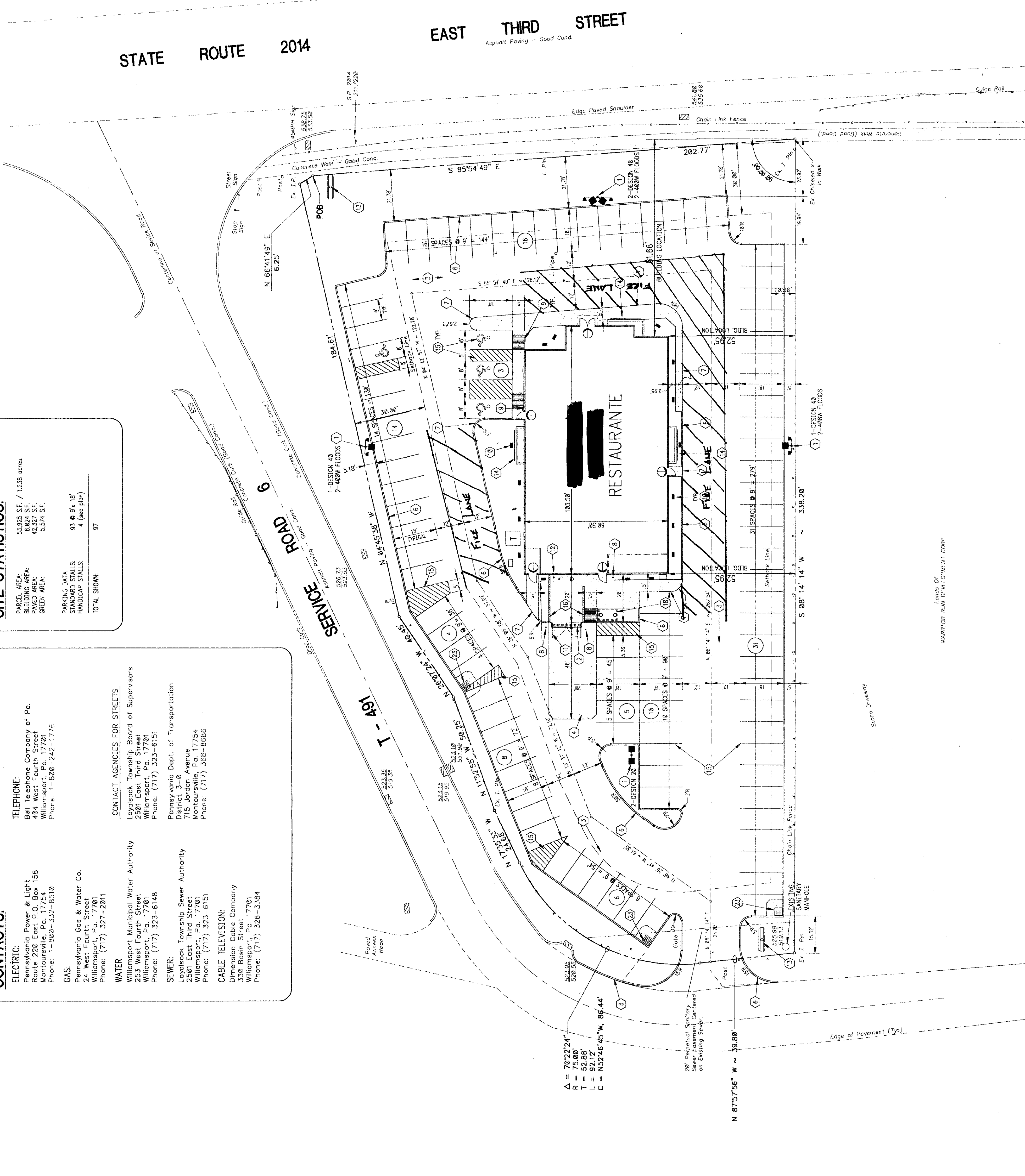
WATER
 Williamsport Municipal Water Authority
 253 West Fourth Street
 Williamsport, Pa. 17701
 Phone: (717) 323-6148

SEWER:
 Loyalsock Township Sewer Authority
 2501 East Third Street
 Williamsport, Pa. 17701
 Phone: (717) 323-6151

CABLE TELEVISION:
 Dimension Cable Company
 330 Basin Street
 Williamsport, Pa. 17701
 Phone: (717) 326-3364

CONTACT AGENCIES FOR STREETS:
 Loyalsock Township Board of Supervisors
 2501 East Third Street
 Williamsport, Pa. 17701
 Phone: (717) 323-6151

Pennsylvania Dept. of Transportation
 District 3--B
 715 Jordan Avenue
 Montoursville, Pa. 17754
 Phone: (717) 368-8886



BID DOCUMENT
NOT FOR CONSTRUCTION

SITE PLAN

SCALE: 1" = 20'-0"