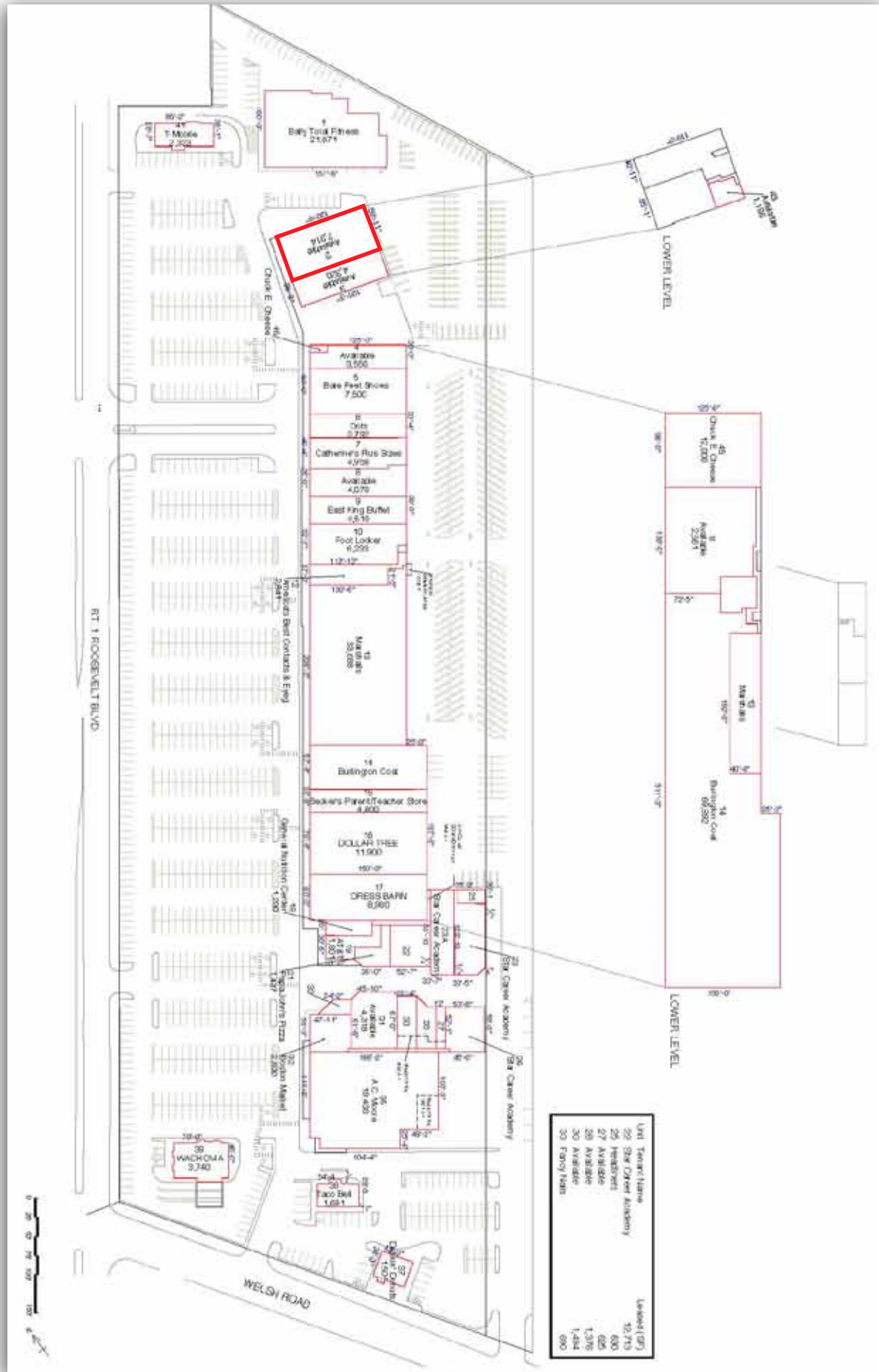


All information furnished regarding property for sale, rental or financing is from sources deemed reliable, but no warranty or representation is made as to the accuracy thereof and same is submitted subject to errors, omissions, change of price, rental or other condition, prior to sale, lease or financing or withdrawal without notice. No liability of any kind is to be imposed on the broker herein.



Site Plan

RESTAURANT AVAILABLE

9183 Roosevelt Boulevard, Philadelphia, PA 19114



7,314 SF AVAILABLE

- Good demographics
- Good access & visibility
- Good traffic counts
- Good co-tenancy

FOR ADDITIONAL INFO

Contact: David Orkin
orkin@rasbrokerage.com

215.322.8070

Contact: Richard Gallivan

508.259.2043

rich@restaurantsites.com

DEMOGRAPHICS

	1 mile	3 miles	5 miles
Population:	20,786	202,478	449,309
Avg HH Inc:	\$45,420	\$52,533	\$57,077
Daytime Pop:	10,336	76,314	163,65

633 West Germantown Pike, Suite 203
Plymouth Meeting, PA 19462
Phone: 215.322.8070
Fax: 215.322.8460

NE Philadelphia, PA

